

SCAFODAT 500

USER MANUAL



EBERHARD & CO

Manufacture Suisse d'Horlogerie depuis 1887

The Eberhard & Co. watch manufactory was founded by Georges-Emile Eberhard at La Chaux-de-Fonds back in 1887. Ever since, the venture has specialised in the making of chronographs. In this capacity, it has attained a highly respected position in the world of high-grade watches. With the introduction, at a later stage, of sportively elegant watches it has furthermore augmented this status of the Eberhard & Co. brand name.

Eberhard's success story is backed by consistent deployment of advanced technology, meticulous craftsmanship and, not least, by observing that long tradition of superior workmanship which has made Swiss watchmaking a household name. Today, with well over a century gone by, watches by Eberhard & Co. continue to stand for that high-grade quality and those excellent virtues which will please even the most demanding of connoisseurs.

Scafodat is the name of the diving-watch collection for professional use; it resumes and actualises the Eberhard & Co.'s tradition in sport watches with technical features.

Scafodat is characterised by impressive dimensions and features such interesting technical details as the big crown located at 4 o' clock, equipped with a special security device. The crown activates the inner rotating flange, protected by a non-reflecting sapphire glass, which is especially useful for indicating diving times on a sexagesimal basis. The watch also features a device (Patent Pending) that lengthens the bracelet such that the watch can be worn over the sleeve of the diving suit.

On the middle part, a typical feature of this diver's watch: the security valve, which works automatically and sees to it that helium escapes in the decompression phase.

The caseback features the embossed traditional Seahorse, which was already used by Eberhard & Co. at the end of the 50s and whose original design was registered on March 6, 1958.

Its production technique and careful selection of materials render the Scafodat water-resistant up to 50 atm., making it a technically very special diver's watch.

SCAFODAT 500: the diver's watch from Eberhard & Co. A "watch for the sea" in the true sense of the word.





- Ⓐ Hours-hand
- Ⓑ Minute-hand
- Ⓒ Seconds-hand
- Ⓓ Winding crown
- Ⓔ Safety pushbutton

- Ⓕ Inner flange crown
- Ⓖ Helium valve
- Ⓗ Date
- Ⓘ Inner flange
- Ⓛ 0 index

FEATURES

SCAFODAT is a mechanical watch with automatic winding. Its steel case has a diameter of 44 mm. The watch features an automatic helium valve and a bidirectional inner flange with a sexagesimal scale. Both crowns are screwed in, the sapphire glass is vaulted and non-reflecting, the caseback is fixed by six screws and personalized by stamping. The hands as well as the big triangular indexes on the dial are highly luminescent to facilitate readability when it's dark and during diving activities. The date is positioned at 3 o' clock.

Available version:

- Steel case with rubber strap or steel bracelet with lengthening (Patent Pending) and deployment clasp Déclic (Patent Pending).

Water-resistant up to 50 atm.

HELIUM VALVE (AUTOMATIC)

The security helium valve © is a distinct element of professional diving watches. It proves its usefulness in all instances where the watch is used for working in deep depths and during long diving activities, for instance in diving bells, i.e. in ambiances where you breathe in a mixture of helium and oxygen. Because helium has such a miniature atomic structure, it can easily penetrate into the case. That is why there is a valve that allows helium, accumulated inside the case at a high pressure, to escape, because otherwise the glass could be expelled forcefully in the emerging phase.

OPERATING INSTRUCTIONS AND READING OF THE INNER FLANGE

In order to adjust the inner flange it is necessary to operate on the crown **(F)** to unlock the safety pushbutton **(E)**:



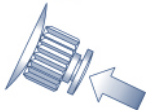
A: Pull out the safety pushbutton **(E)** until it clicks into place.



B: Unscrew the crown **(F)** by turning it counter-clockwise. In this way the mechanism that activates the bidirectional inner flange **(L)** will snap in automatically. It is now possible to align the zero index **(L)** and the minutes-hand of the watch **(B)**. From then onwards it is possible to read the time continuously that elapses during diving or in any other situation. The first 15 minutes displayed on the inner flange are luminescent to optimise readability.



C: Screw the crown **(F)** back in, pushing it slightly towards the case.



D: As soon as it is fully screwed in, push the safety pushbutton **(E)** in until it snaps.

IMPORTANT

To avoid damage, don't push the safety pushbutton **(E)** if the crown is unscrewed. Once the safety pushbutton **(E)** has been pushed, don't turn the crown.

OPERATING THE CROWN ④



POS. A: Screwed-in crown, water-resistance guaranteed.



POS. B: HAND-WINDING OF THE WATCH – To unscrew the crown turn it counterclockwise. When it is unscrewed, turn it clockwise to transmit the manual charge to the movement. If your SCAFODAT has not been worn for some time, the movement has to be wound manually, in order to obtain immediately a sufficient power-reserve and to ensure accurate working of the watch.



POS. C: RAPID DATE-SETTING – Pull the crown to the first catch. Turning the crown counter-clockwise, you can then set desired date.



POS. D: TIME SETTING – To set the time (hours and minutes), pull the crown to the second catch.

IMPORTANT

To set back the crown, push it lightly against the watch case while turning it clockwise until it is fully screwed in again.

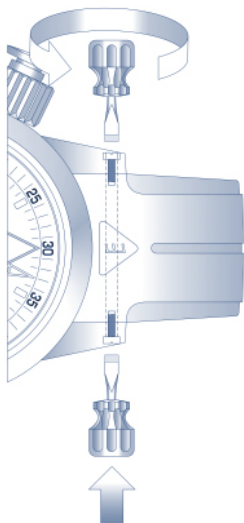
Before diving make sure that both the crowns ④ and ⑤ are locked. Only in this case the water-resistance is guaranteed.

INSTRUCTIONS FOR REPLACING THE RUBBER STRAP OR STEEL BRACELET

If the rubber strap or steel bracelet requires replacement, you are advised to consult one of the after-sales centres of Eberhard & Co. or a qualified watchmaker because special tools are needed for this work.

The assembly system consists of the following parts:

- A 1 pin, with inner thread on both sides for the screws
- B 2 self-locking pan head screws



To dismantle the strap or the bracelet, the screws **(B)** must be removed with a suitable tool or with two screwdrivers. In this case, the first screwdriver must be held in a vice, which serves as a holding device for one of the screws while the second one is used to unscrew the opposite screw in counter-clockwise direction.

As soon as one of the two screws **(B)** has been removed, the pin **(A)** can be pulled out by pressing it in the opposite direction, releasing the strap/bracelet in this way.

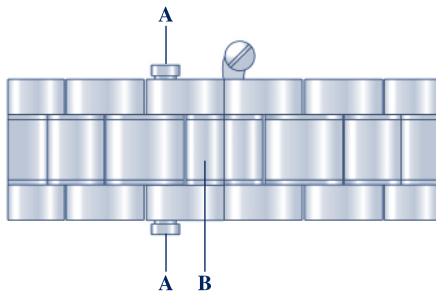
For assembling the new strap/bracelet, do follow the same steps but in reverse order. From this point on, the watchstrap is assembled in reverse order.

IMPORTANT: As the screws are self-locking, it is normal to notice a certain resistance during the last turns when screwing them in. To close the screws properly, they must be screwed in completely up to the last turn.

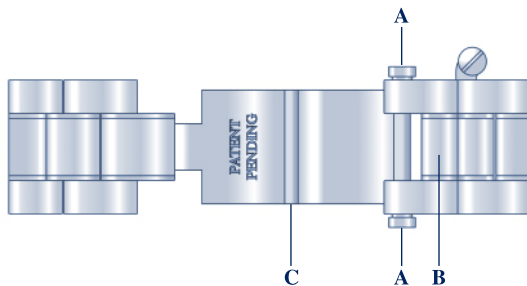
LENGTHENING OF BRACELET “CHICANE”

The steel bracelet has a special lengthening system that allows, by making a simple adjustment, the watch to be worn on top of diving suits of about 4 mm. thickness.

In order to activate the extension it is necessary to pull out simultaneously the two cylindrical knobs (A). In this way the central link (B) of the bracelet will be released and, once pulled up from its original position, will allow the extension links (C) to extend.



In order to close the lengthening system, fold up the extension links (C) and return the central link (B) to its original position by moving it downwards. Press down until the lock snaps in.



DIRECTIONS FOR USE OF WATER-RESISTANT WATCHES

We strongly recommend that you verify the position of both crowns before all underwater activities. After use in seawater, rinse the watch in fresh water. Don't adjust the crowns while the watch is wet.

We strongly recommend that you let check the water-resistance by a qualified technical service facility at least once a year, or in any case before intensive use, and to have the gaskets replaced if necessary.



Founded well over a century ago in 1887, the Eberhard & Co. manufactory has since been concerned to abide by its own watchmaking philosophy. Your “Eberhard” was likewise manufactured by us in that tradition of commitment to superior workmanship and the choicest of materials for the best possible product, and this is now confirmed by the most up-to-date technical service backed by the extreme care with which our well-trained staff have made this watch of yours to the best of their faculties.

We hereby guarantee your watch to be free from any defects in the way of materials used or workmanship in manufacture, for a period of 24 months under the proviso that the watch is maintained and handled properly. This guarantee does not cover damages incurred by faulty handling or exposure to shock or other adverse impact.

For technical revisions of the “SCAFODAT” model please contact only technical service facilities authorised by Eberhard & Co. The shipping and insurance charges are to be paid by the owner.

We recommend to have the movement checked every 3 (three) years or whenever optimum functioning and precision are no longer ensured.

May your Eberhard & Co. “SCAFODAT” see you through “good times at any time”.



www.eberhard-co-watches.ch